

LANDSCAPE PLAN
SCALE: 1"=80'-0"



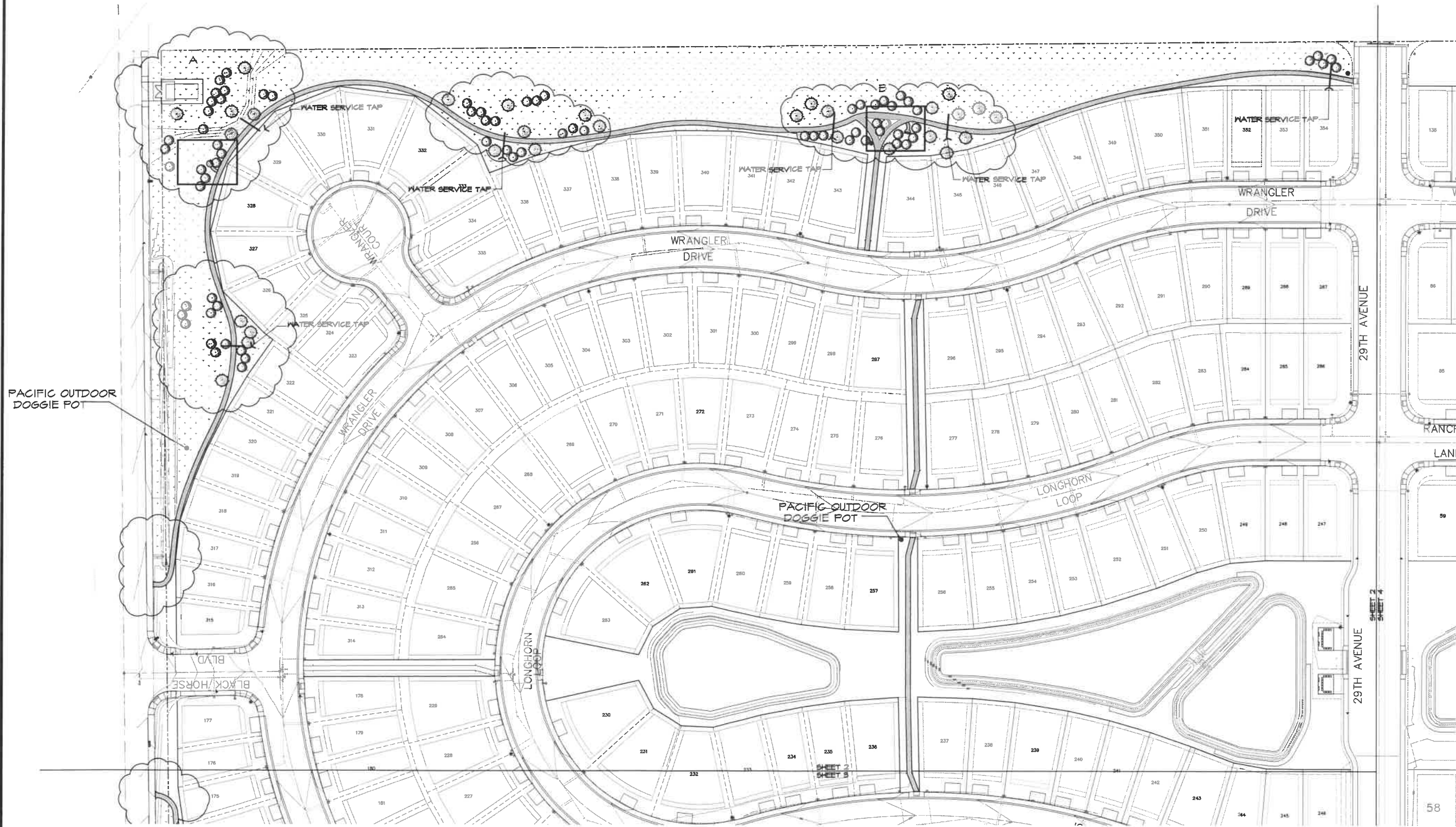
Date: 02/14/21
 08/09/21
 08/11/21

CRAMER DESIGN CONSULTANTS, INC.
 LANDSCAPE ARCHITECT
 1909 242ND STREET SE
 BOTHELL, WA 98021
 425-241-6258



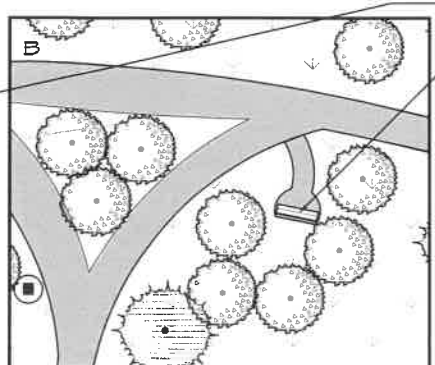
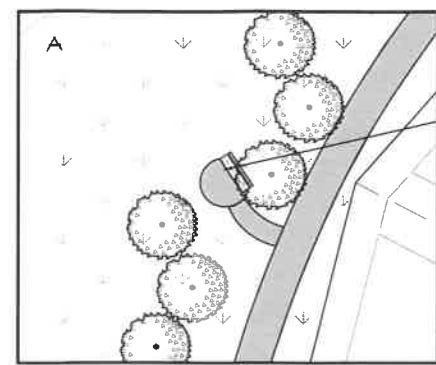
BLACK HORSE

SHEET
L-01
 OF 7 SHEETS



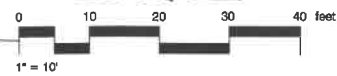
PACIFIC OUTDOOR DOGGIE POT

PACIFIC OUTDOOR DOGGIE POT



BENCH

BENCH LOCATIONS
SCALE: 1"=10'-0"



PATH & TREE PLAN
SCALE: 1"=40'-0"



PLANT SCHEDULE PERIMETER PATH

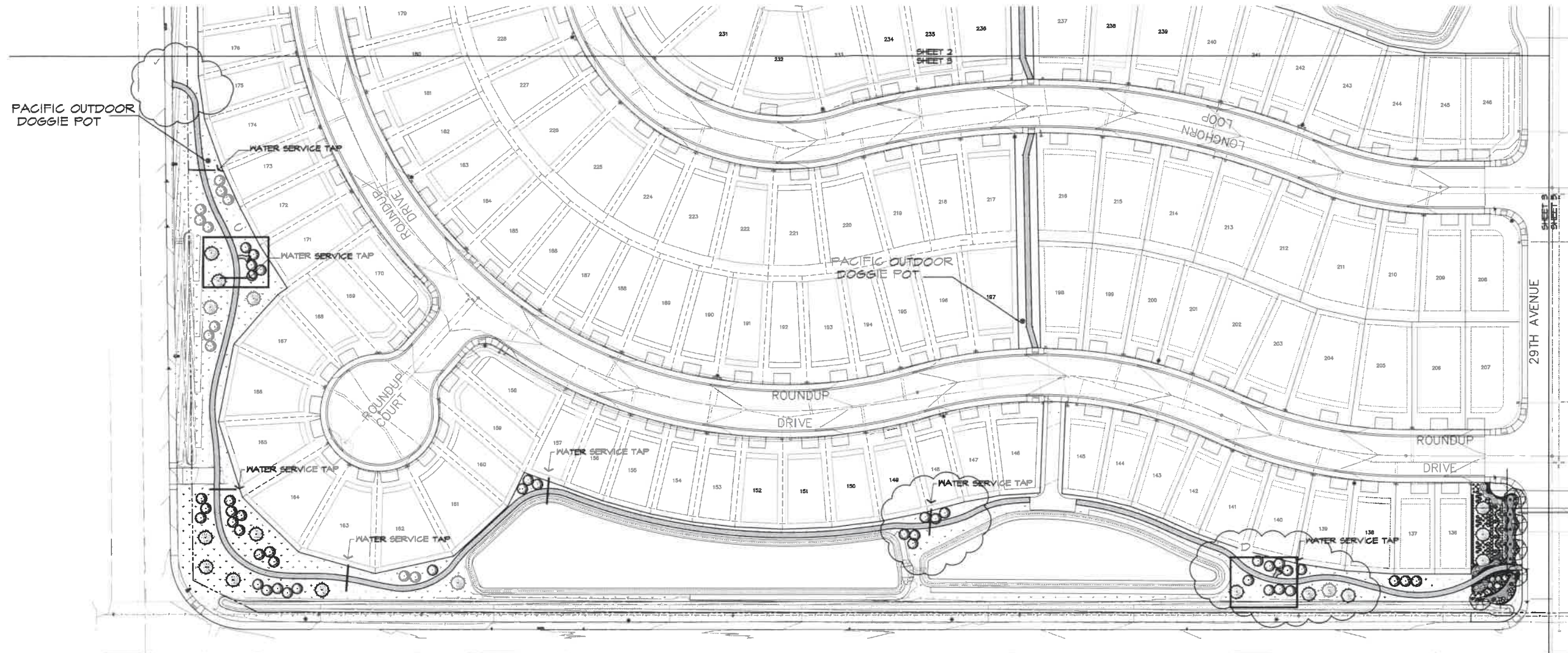
TREES	BOTANICAL NAME	COMMON NAME	SIZE	QTY
	Pinus nigra	Austrian Black Pine	10'-12' Ht.	48
	Populus tremuloides	Quaking Aspen	1.5' Cal.	127
GRASS/SEED	BOTANICAL NAME	COMMON NAME	SIZE	QTY
		Meadow mix	Hydroseed	182,926 sf

Drawn: BLK
 Checked: 08/09/21
 Revised: 08/09/21
 06242121 - revised water service locations and new monument set

CRAMER DESIGN CONSULTANTS, INC.
 LANDSCAPE ARCHITECT
 1909 242ND STREET SE
 BOTHELL, WA 98021
 425-241-6258

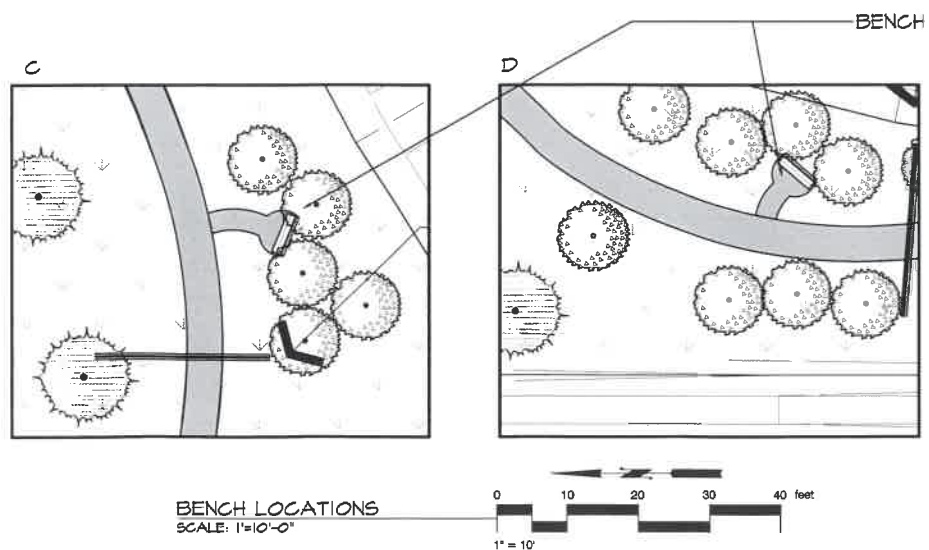


BLACK HORSE



08/19/21
 Revised Perimeter Path - Drawn By
 08/11/21 - Detail - www.cramer-landscapes.com - 08/11/21

CRAMER DESIGN CONSULTANTS, INC.
 LANDSCAPE ARCHITECT
 1909 242ND STREET SE
 BOTHELL, WA 98021
 425-241-6258



1 PACIFIC OUTDOOR BENCH SE-3160
 NTS



2 PACIFIC OUTDOOR DOGGIE POT DE-3180
 NTS

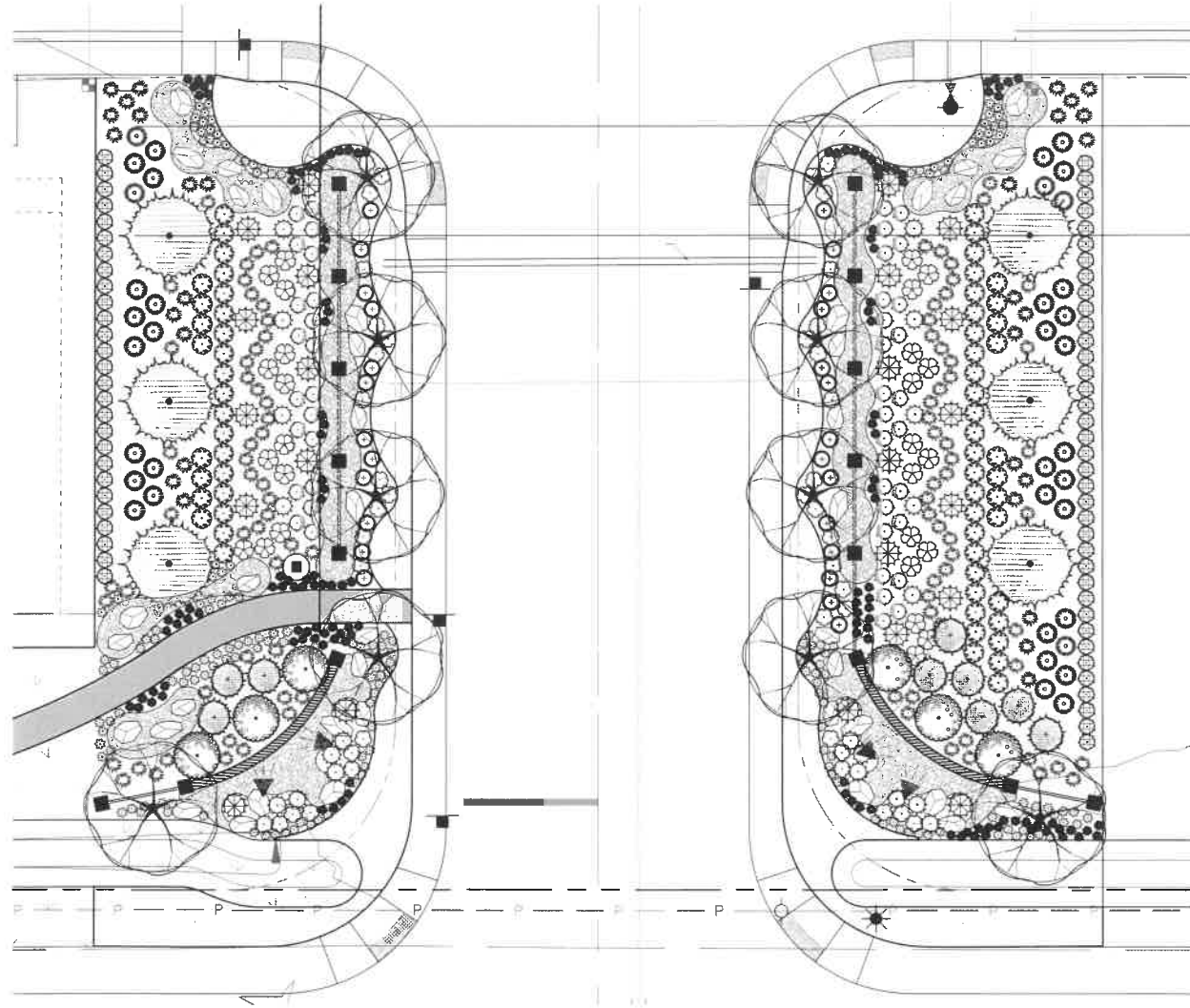
PATH & TREE PLAN
 SCALE: 1"=40'-0"



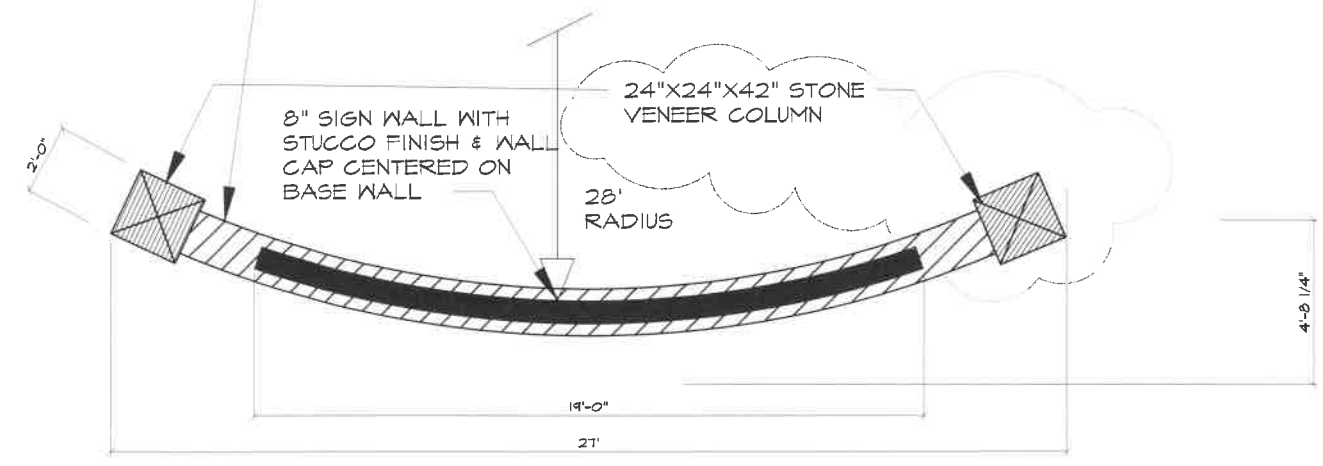
PLANT SCHEDULE PERIMETER PATH

TREES	BOTANICAL NAME	COMMON NAME	SIZE	QTY	
2	Pinus nigra	Austrian Black Pine	10'-12" HL.	45	
3	Populus tremuloides	Quaking Aspen	1.5" Cal.	127	
SOD/SEED	BOTANICAL NAME	COMMON NAME	SIZE	SPACING	QTY
1	Meadow mix		Hydroseed		182,426 sq

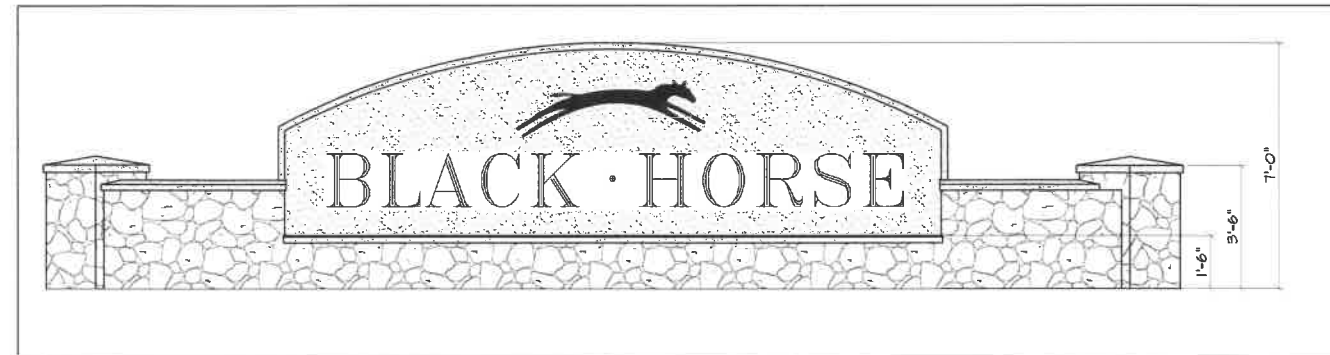
BLACK HORSE



16" WIDE BASE WALL WITH STONE VENEER & WALL CAP



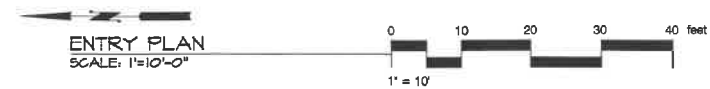
ENTRY MONUMENT
SCALE: 1"=2'-0"



ENTRY MONUMENT ELEVATION
NOT TO SCALE

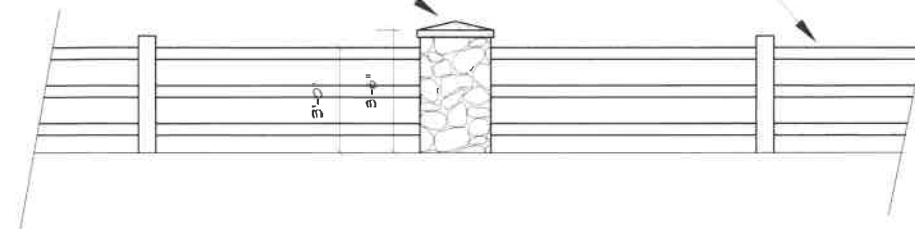
LIGHTING SCHEDULE

SYMBOL	MANUFACTURER	MODEL	DESCRIPTION	QTY	DETAIL
◀	Spot Light			4	



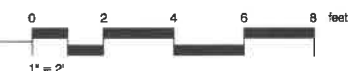
ENTRY PLAN
SCALE: 1"=10'-0"

24"x24"x42" STONE VENEER COLUMN
WESTERN POST & RAIL FENCE



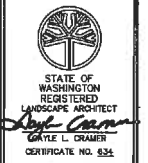
WESTERN POST & RAIL FENCING
6-1/2"x5" POSTS WITH 8"x4" TURNED RAILS

COLUMNS AND FENCING
SCALE: 1"=2'-0"

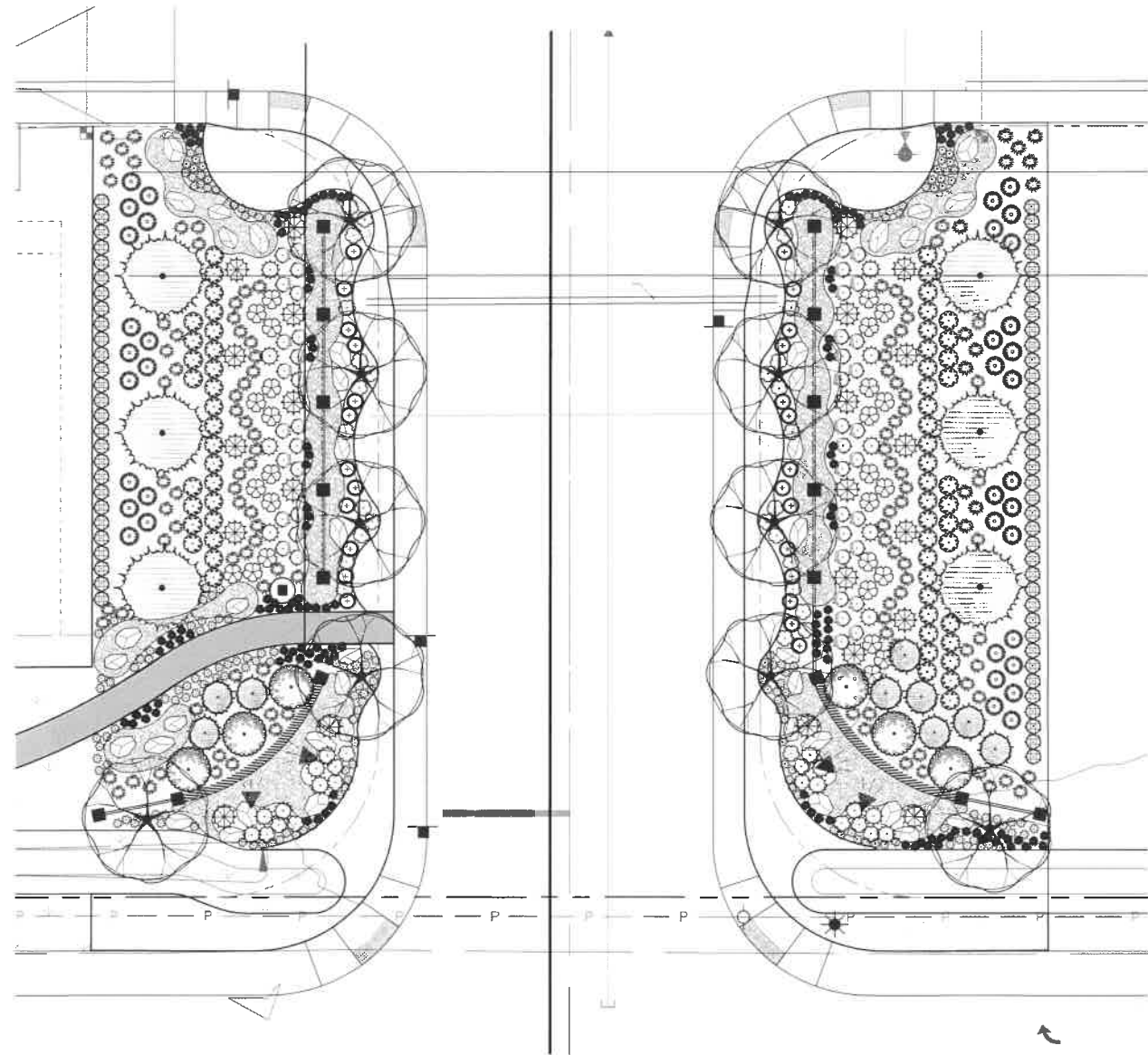


09/19/21
08/09/21
08/11/21

CRAMER DESIGN CONSULTANTS, INC.
LANDSCAPE ARCHITECT
1909 242ND STREET SE
BOTHELL, WA 98021
425-241-6258



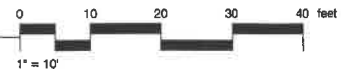
BLACK HORSE









LIGHTING SCHEDULE

SYMBOL	MANUFACTURER/MODEL/DESCRIPTION	QTY	DETAIL
	Spot Light	4	

ENTRY PLAN
SCALE: 1"=10'-0"



PLANT SCHEDULE ENTRY

TREES	BOTANICAL / COMMON NAME	CONT	QTY
	<i>Acer rubrum</i> 'Autumn Blaze' / Autumn Blaze Red Maple	2.5"Cal	10
	<i>Pinus flexilis</i> 'Vanderwolf's Pyramid' / Vanderwolf's Pyramid Pine	6'-7' Ht.	9
	<i>Pinus nigra</i> / Austrian Black Pine	10'-12' Ht.	6
	<i>Populus tremuloides erecta</i> / Swedish Aspen	2.5"Cal	6
SHRUBS	BOTANICAL / COMMON NAME	SIZE	QTY
	<i>Berberis thunbergii</i> 'Crimson Pygmy' / Crimson Pygmy Barberry	5 gal	41
	<i>Calamagrostis x acutiflora</i> 'Karl Foerster' / Feather Reed Grass	5 gal	126
	<i>Cornus alba</i> 'Baillhali' TM / Ivory Halo Dogwood	24/30"	62
	<i>Juniperus scopulorum</i> 'Blue Arrow' / Blue Arrow Juniper	42/48"	37
	<i>Juniperus scopulorum</i> 'Blue Star' / Blue Star Juniper	2 gal	26
	<i>Juniperus virginiana</i> 'Grey Owl' / Eastern Redcedar	2 gal	45
	<i>Pennisetum alopecuroides</i> 'Little Bunny' / Little Bunny Fountain Grass	1 gal	147
	<i>Pinus mugo</i> / Mugo Pine	5 gal	21
	<i>Pinus strobus</i> 'Nana' / Dwarf Eastern White Pine	24/30"	28
	<i>Spiraea x bumalda</i> 'Goldmound' / Gold Mound Spirea	5 gal	27
	<i>Thuja occidentalis</i> 'Emerald Green' / Emerald Green Arborvitae	6'-7' Ht.	64
PERENNIALS	BOTANICAL / COMMON NAME	SIZE	QTY
	<i>Lavandula angustifolia</i> 'Hidcote' / Hidcote English Lavender	1 gal	171
SITE	BOTANICAL / COMMON NAME	CONT	QTY
	ROCK ACCENT River Rock 4" depth	None	1,227 sf
SOD/SEED	BOTANICAL / COMMON NAME	CONT	QTY
	Bioswale Hydroseed / Cascade Green Bioswale Mix	Hydroseed	17,346 sf
	LAWN with 4" topsoil	Hydroseed	2,130 sf








Prepared by: [Signature]
 Checked by: [Signature]
 Date: 10/22/21
 Location: Black Horse, WA

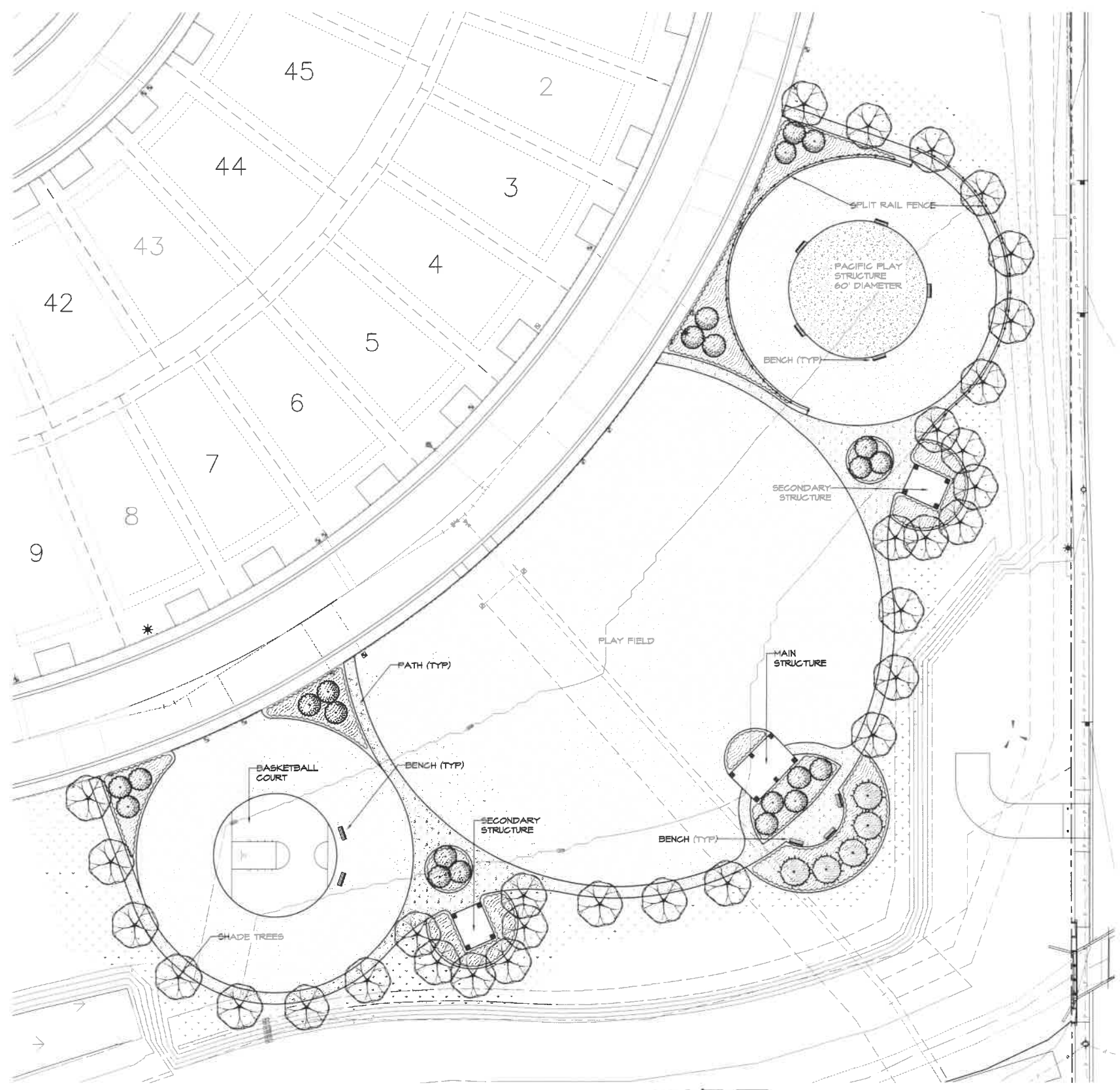
CRAMER DESIGN CONSULTANTS, INC.
 LANDSCAPE ARCHITECT
 1909 242ND STREET SE
 BOTHELL, WA 98021
 425-241-6258



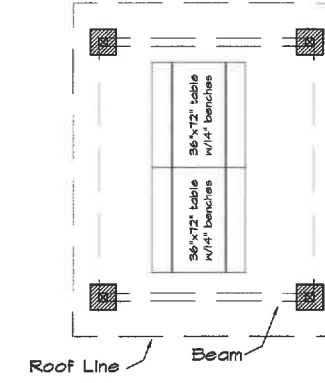
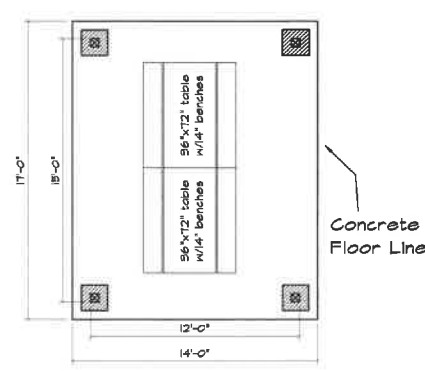
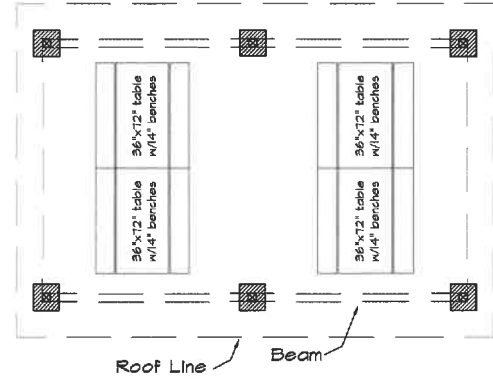
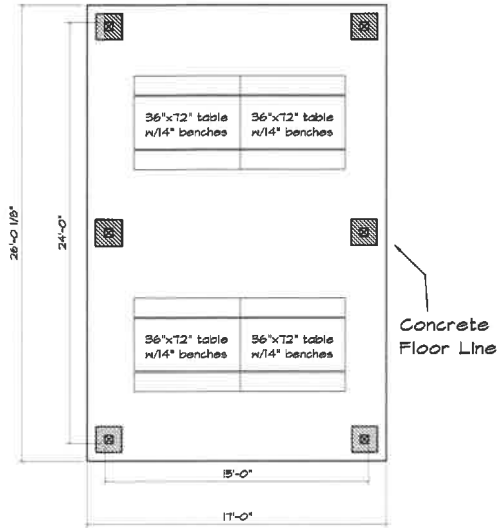
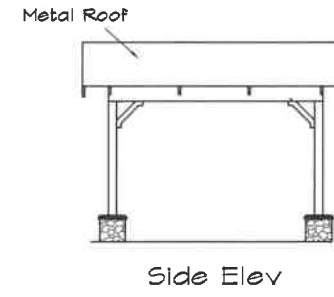
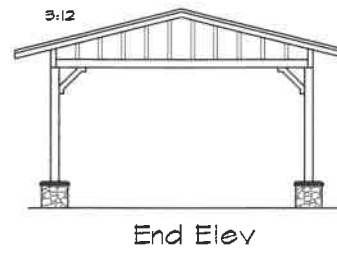
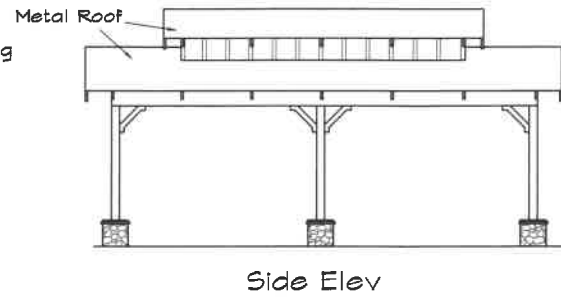
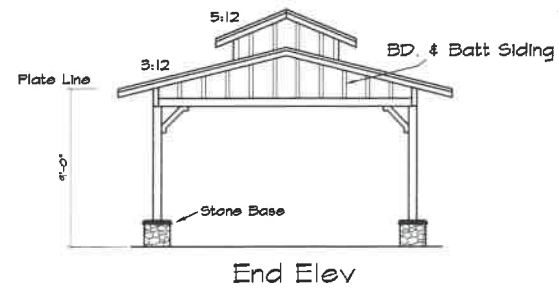
BLACK HORSE

PLANT SCHEDULE RECREATION AREA

TREES	BOTANICAL NAME	COMMON NAME	SIZE	QTY	
	<i>Acer rubrum</i> 'Autumn Blaze'	Autumn Blaze Red Maple	2.5' Gal	32	
	<i>Picea nigra</i>	Austrian Black Pine	10'-12' Ht.	5	
	<i>Populus tremuloides</i>	Quaking Aspen	1.5' Gal.	28	
SITE	BOTANICAL NAME	COMMON NAME	SIZE	SPACING	QTY
		12" Engineered Wood Fibers	N/A		2,827 sf
		Strips & Groundcovers	—		6,826 sf
SOD/SEED	BOTANICAL NAME	COMMON NAME	SIZE	SPACING	QTY
	<i>Bloniale</i> Hydroseed	Cascade Green Bloniale Mix	Hydroseed		2,521 sf
	LAWN		Hydroseed		52,906 sf
	Meadow mix		Hydroseed		17,071 sf



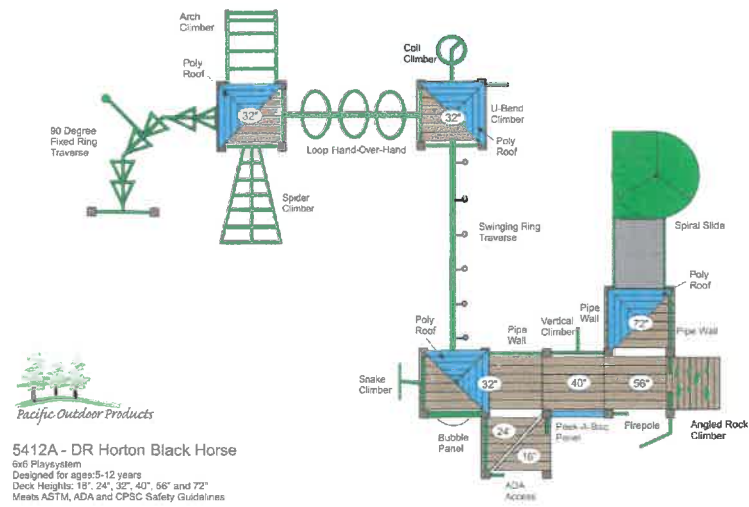
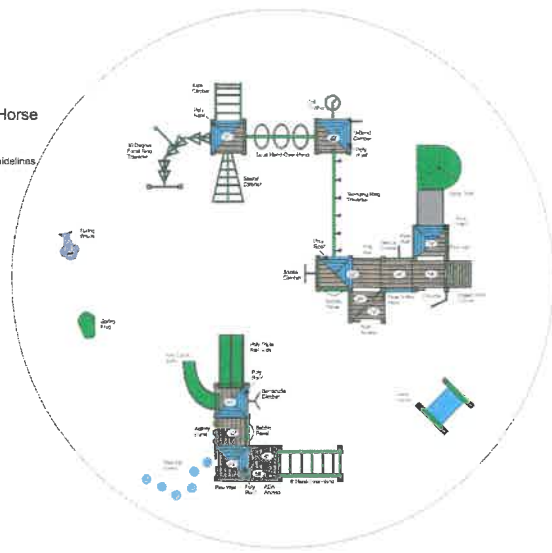
LANDSCAPE PLAN
 SCALE: 1"=20'-0"



MAIN STRUCTURE
SCALE: 1"=4'-0"

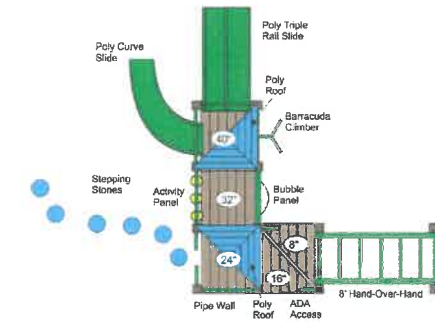
SECONDARY STRUCTURE
SCALE: 1"=4'-0"

Pacific Outdoor Products
5412 - DR Horton Black Horse
6x8 Playsystem
Area needed: 60' Circle
Designed for ages: 2-5 and 5-12 years
Meets ASTM, ADA and CPSC Safety Guidelines.



Pacific Outdoor Products
5412A - DR Horton Black Horse
6x8 Playsystem
Designed for ages: 5-12 years
Deck Heights: 18", 24", 32", 40", 56" and 72"
Meets ASTM, ADA and CPSC Safety Guidelines.

Pacific Outdoor Products
5412B - DR Horton Black Horse
6x8 Playsystem
Designed for ages: 2-5 years
Deck Heights: 8", 16", 24", 32" and 40"
Meets ASTM, ADA and CPSC Safety Guidelines.



PLAY STRUCTURES
NTS

Cramer_02/08/21

CRAMER DESIGN CONSULTANTS, INC.
LANDSCAPE ARCHITECT
1909 24TH STREET, SE
BOTHELL, WA 98021
425-241-6258



BLACK HORSE